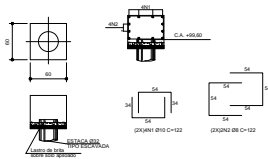
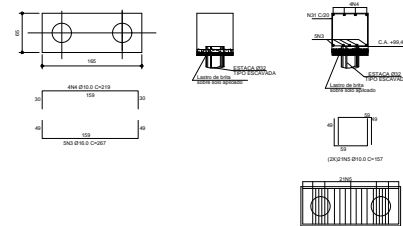


LISTA DE BARRAS			
T	L	Q	COMPRIMENTOS
			CMPT. C/CM
1	10	30	120
2	8	28	112
3	16	60	267
4	10	40	216
5	10	420	147
6	16	160	253
7	10	53	127
8	10	33	262
9	8	120	276
10	8	48	216
11	10	78	233
12	8	31	376
13	8	12	264
14	8	3	960
RESUMO AÇO CA-50			
Q	COMPRIMENTO m	PERÍMETRO m	PERÍMETRO m
0,3	1708,50		
8	283,42		
16	1903,36	1	
16	1095,60		
TOTAL			36

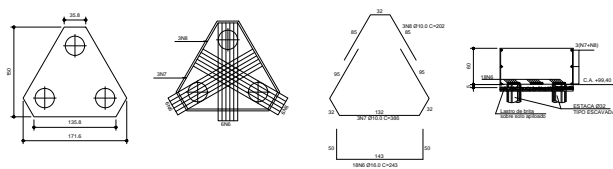
BLOCO B1 60x60 h=45 (7x)
ESCALA - 1:25



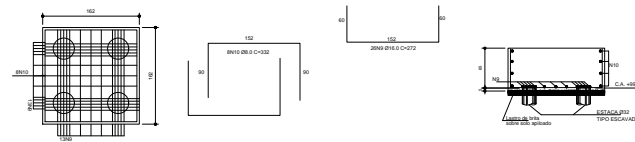
BLOCO B2 165x65 h=60 (10x)
ESCALA - 1:25



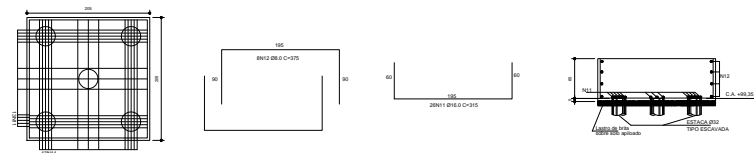
BLOCO B3 150x172 h=65 (11x)
ESCALA - 1:25



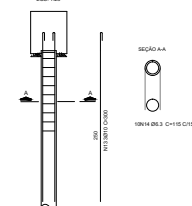
BLOCO B4 160x160 h=70 (6x)
ESCALA - 1:25



BLOCO B5 205x205 h=70 (3x)
ESCALA - 1:25



ARMAÇÃO DAS ESTACAS (99X)
ESC. 1:25

[illegible]

CAMPUS CEETEPS EM MONTE MOR		158 - ETEC MONTE MOR
ESTRADA MONTE MOR X SUMARÉ, 3197 - MONTE MOR / SP		
ESTRUTURA	1/50	EST-029/059

9	20.0
12.5	6

NOTAS	
1 - NÃO TONAR MEDIDA ESFERICAL	7 - RESPECTIVE O DIÂMETRO INTERNO DA CLIPATURA DO LANCHEO DA ANISCLUSA
2 - VERIFICAR MEDIDA NO LOCAL	8 - RESPECTIVAMENTE A ADRESSIVIDADE E
3 - CONCENTRO POR $\pm 10\%$	

