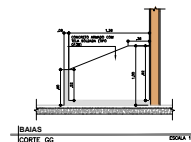
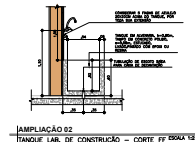
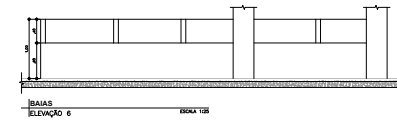
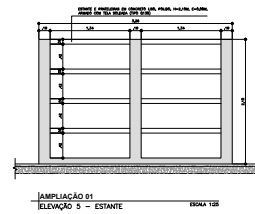
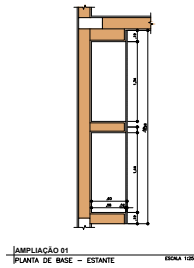
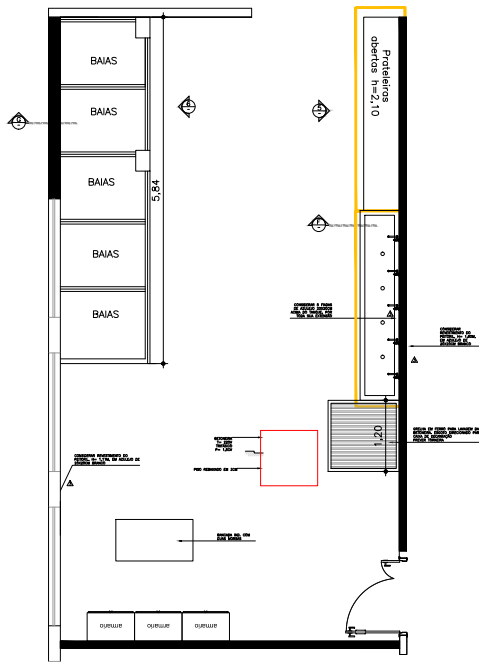


PRODUCED BY AN AUTODESK EDUCATIONAL PRODUCT



L:\DADOS\ENTRADA\PROJETO\BIBLIOTECA\BIBLIOTECA\BIBLIOTECA\BIBLIOTECA\BIBLIOTECA

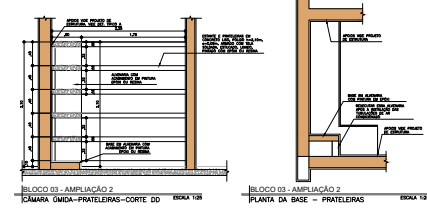
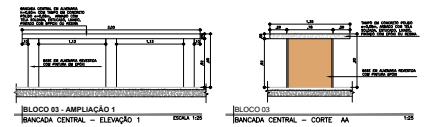
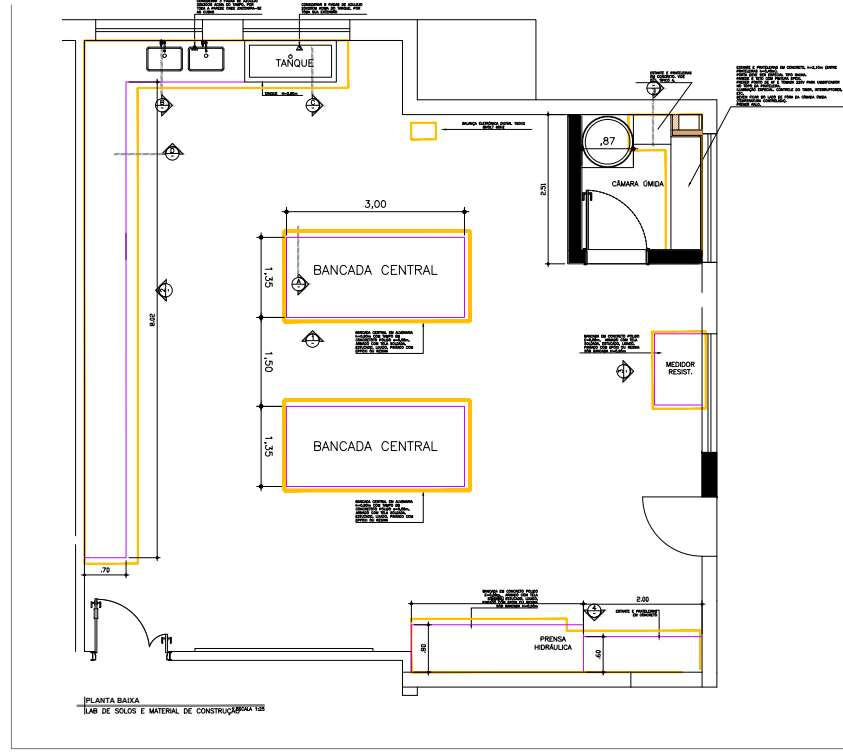
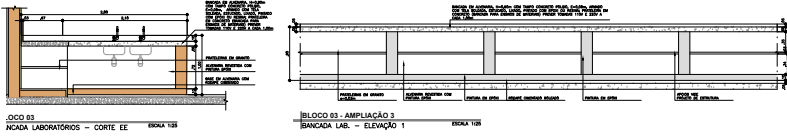
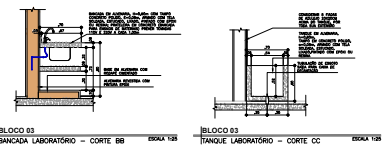
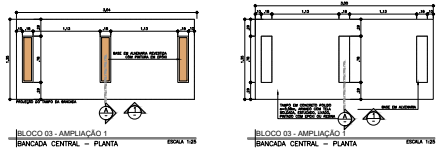
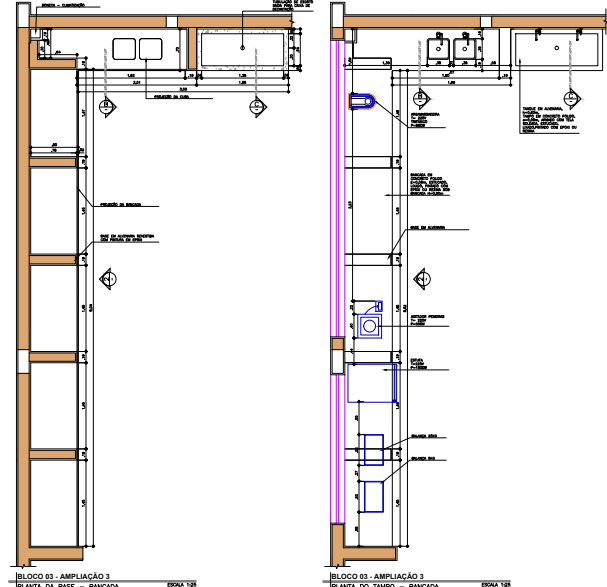
CAMPUS CEETEPS EM LINS 145 - R. TEC. DE LINS	
PROJETO BÁSICO	
ARGUMENTAÇÃO	1/25
PROJETO BÁSICO AMPLIAÇÃO E INSTALAÇÃO LABORATÓRIO DE CONSTRUÇÃO CIVIL ASSUNTO	
ARQ-006/009	



CEETEPS CAP 202104915A



PRODUCED BY AN AUTODESK EDUCATIONAL PRODUCT



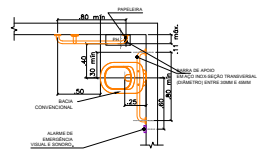
CAMPUS CEETEPS EM LINS	
PROJETO DE ARQUITETURA	
PROJETO BÁSICO	ARQ-007/009
LABORATÓRIO DE FÍSICA E MATERIAL DE CONSTRUÇÃO	



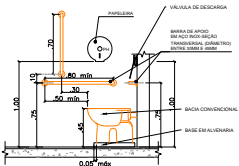
CEETEPS CAP 202104915A

PRODUCED BY AN AUTODESK EDUCATIONAL PRODUCT

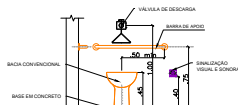
PRODUCED BY AN AUTODESK EDUCATIONAL PRODUCT



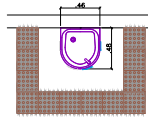
**DETALHE TÍPICO  
 SANITÁRIO ACESSÍVEL**  
 PLANTA - BACIA SANITÁRIA  
 Esc: 1:25



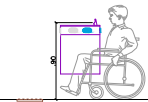
**DETALHE TÍPICO  
 SANITÁRIO ACESSÍVEL**  
 ELEVACÃO LATERAL - BACIA SANITÁRIA  
 Esc: 1:25



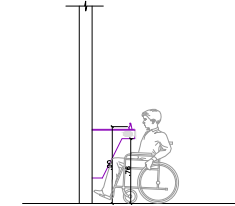
**DETALHE TÍPICO  
 SANITÁRIO ACESSÍVEL**  
 ELEVACÃO FRONTAL - BACIA SANITÁRIA  
 Esc: 1:25



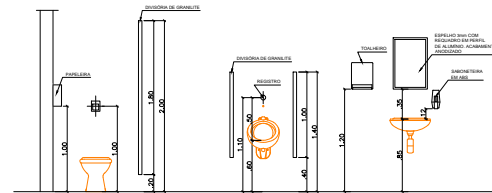
**DETALHE TÍPICO  
 BEBEDOURO ACESSÍVEL**  
 PLANTA  
 Esc: 1:25



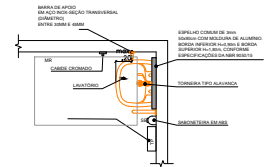
**DETALHE TÍPICO  
 BEBEDOURO ACESSÍVEL**  
 VISTA FRONTAL  
 Esc: 1:25



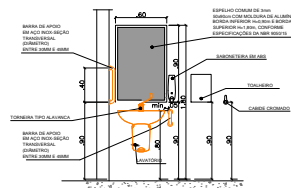
**DETALHE TÍPICO  
 BEBEDOURO ACESSÍVEL**  
 VISTA FRONTAL  
 Esc: 1:25



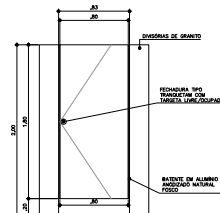
**DETALHE TÍPICO  
 GABARITO PADRÃO SANITÁRIOS**  
 VISTA  
 Esc: 1:25



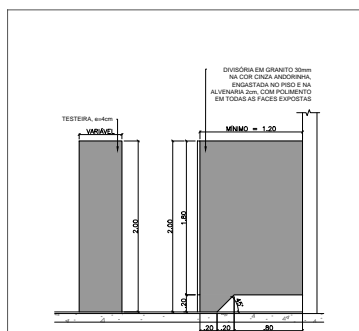
**DETALHE TÍPICO  
 SANITÁRIO ACESSÍVEL**  
 PLANTA - LAVATÓRIO  
 Esc: 1:25



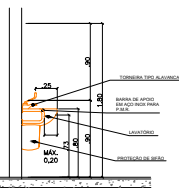
**DETALHE TÍPICO  
 SANITÁRIO ACESSÍVEL**  
 ELEVACÃO FRONTAL - LAVATÓRIO  
 Esc: 1:25



**PN04** 0,80x1,80  
**ELEVACÃO** Esc: 1:25  
 CONJUNTO DE PORTA DE ABERTURA  
 PARA DIVISÓRIA DOS SANITÁRIOS  
 ACABAMENTO EM ESMALTE SINTÉTICO



**DETALHE TÍPICO DIVISÓRIA DE  
 GRANILITE SANITÁRIOS**  
 VISTA E CORTE  
 Esc: 1:25



**DETALHE TÍPICO  
 SANITÁRIO ACESSÍVEL**  
 ELEVACÃO LATERAL - LAVATÓRIO  
 Esc: 1:25

PROJETO	INDICADA	PROJETO	ARQ-008/009
PROJETO BÁSICO	DETALHES TÍPICOS	SANITÁRIOS	ADICIONAIS
PROJETO	INDICADA	PROJETO	ARQ-008/009
PROJETO BÁSICO	DETALHES TÍPICOS	SANITÁRIOS	ADICIONAIS
PROJETO	INDICADA	PROJETO	ARQ-008/009
PROJETO BÁSICO	DETALHES TÍPICOS	SANITÁRIOS	ADICIONAIS
PROJETO	INDICADA	PROJETO	ARQ-008/009
PROJETO BÁSICO	DETALHES TÍPICOS	SANITÁRIOS	ADICIONAIS

**UIE**  
 Unidade de Infraestrutura

**CPS**  
 Companhia de Planejamento do Estado de São Paulo

**GOVERNO DO ESTADO DE SÃO PAULO**

**CAMPUS CEETEPS EM LINS** 148 - ETC DE LINS

RUA SÃO PEDRO, 330 - VILA PERIN - CEP 14400-037 - LINS-SP

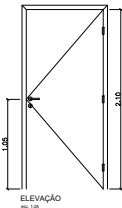
**ARQUITETURA** INDICADA PROJETO ARQ-008/009

PROJETO BÁSICO  
 DETALHES TÍPICOS  
 SANITÁRIOS  
 ADICIONAIS

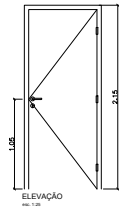
KAMILA IOCE KAMILA IOCE LUC



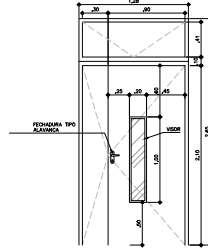
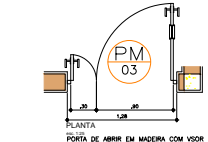
PRODUCED BY AN AUTODESK EDUCATIONAL PRODUCT



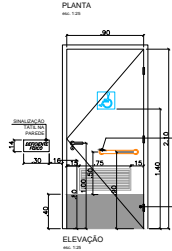
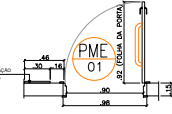
AMBIENTES:  
 ENTRADA DOS SANITÁRIOS  
 ALMOXARIFADOS



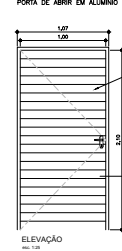
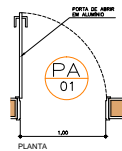
AMBIENTES:  
 SALA AO LADO CANTINA



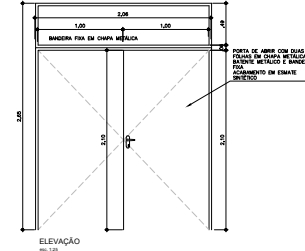
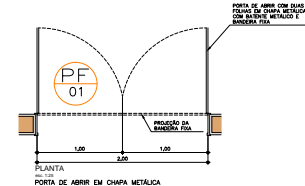
AMBIENTES:  
 LABORATÓRIOS INFORMÁTICA  
 LABORATÓRIOS DE EDIFICAÇÕES  
 LABORATÓRIO ENFERMAGEM  
 SALA DE TOPOGRAFIA  
 BIBLIOTECA



AMBIENTES:  
 SANITÁRIO ACESSÍVEL

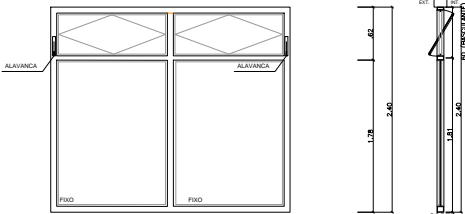
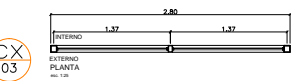


AMBIENTES:  
 CÂMARA ÚMIDA



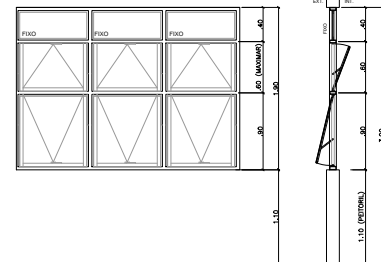
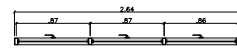
AMBIENTES:  
 LABORATÓRIO CONSTRUÇÃO CIVIL

CX 03



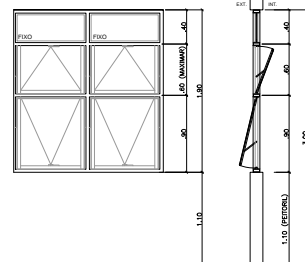
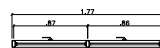
AMBIENTES:  
 BIBLIOTECA

CX 01



AMBIENTES:  
 LABORATÓRIOS DE INFORMÁTICA

CX 02



AMBIENTES:  
 LABORATÓRIOS DE INFORMÁTICA

PRODUCED BY AN AUTODESK EDUCATIONAL PRODUCT

UNIVERSIDADE DE SÃO PAULO	
UNIVERSIDADE DE SÃO PAULO	UNIVERSIDADE DE SÃO PAULO
UNIVERSIDADE DE SÃO PAULO	UNIVERSIDADE DE SÃO PAULO



CAMPUS CEETEPS EM LINS		148- ETEC DE LINS
RUA SÃO PEDRO, 330 - VILA PERIL - CEP 14500-037 - LINS SP		
PROJETO	INDICADA	ARQ-009/009

PROJETO BÁSICO	
BLOCO BARRACÃO E BLOCO PRINCIPAL	
ESQUADRIAS	
ADRIÇÕES	
KAMILA IOCE	LISE

