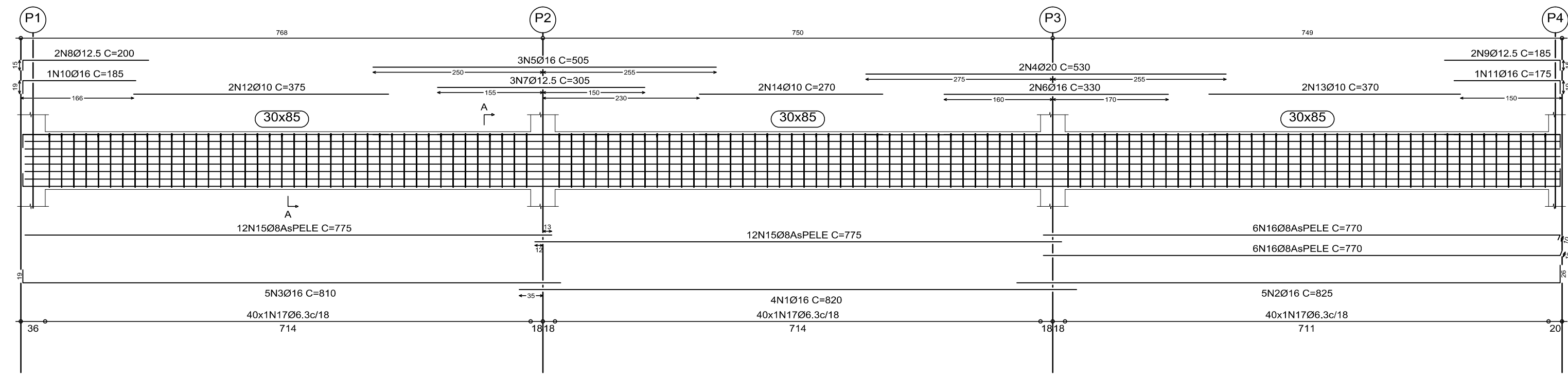
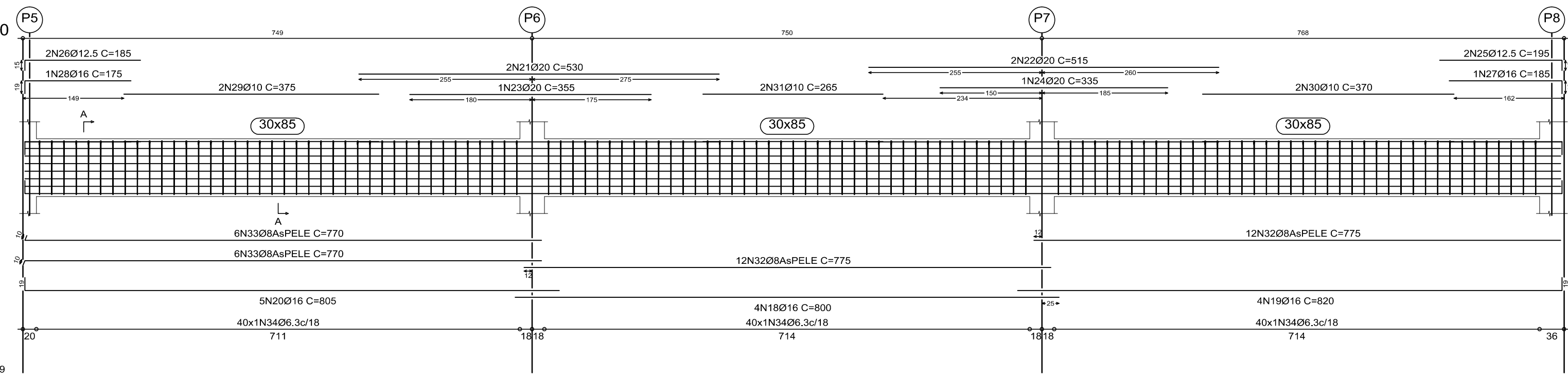


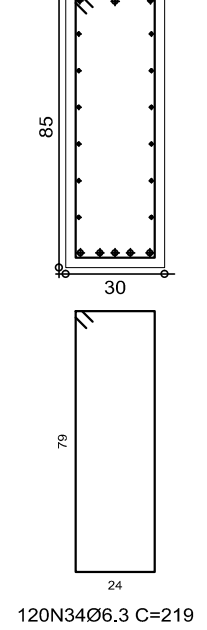
V 201
Escala 1:50



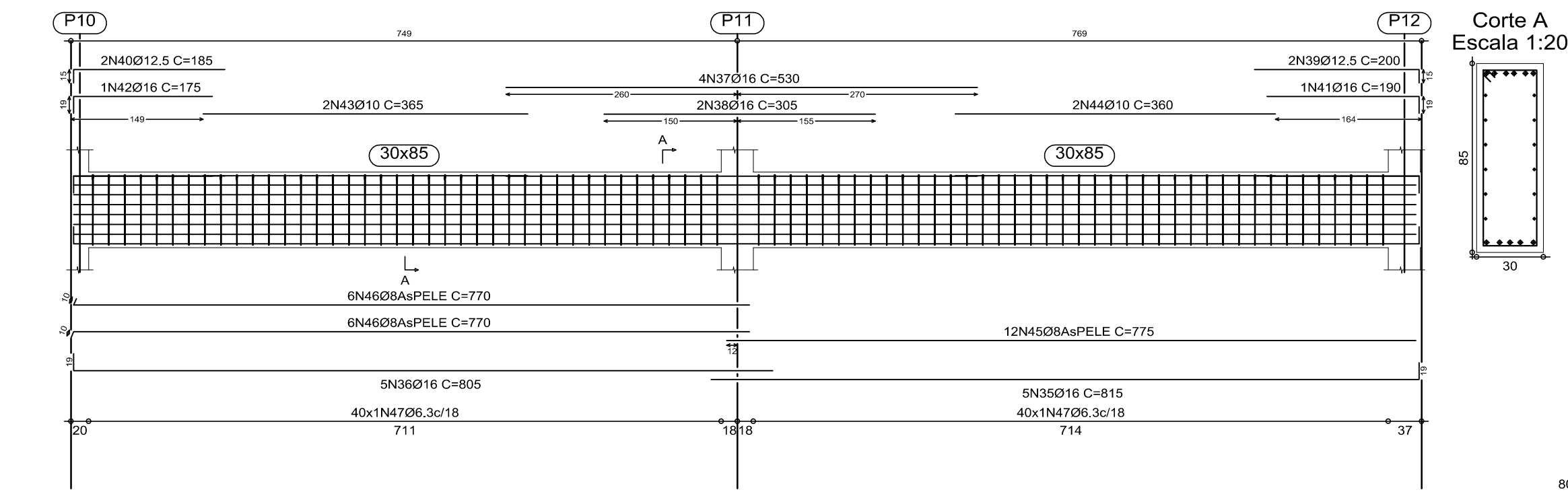
V 202
Escala 1:50



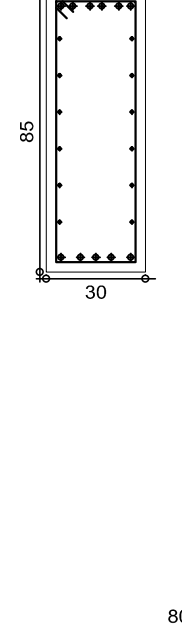
Corte A
Escala 1:20



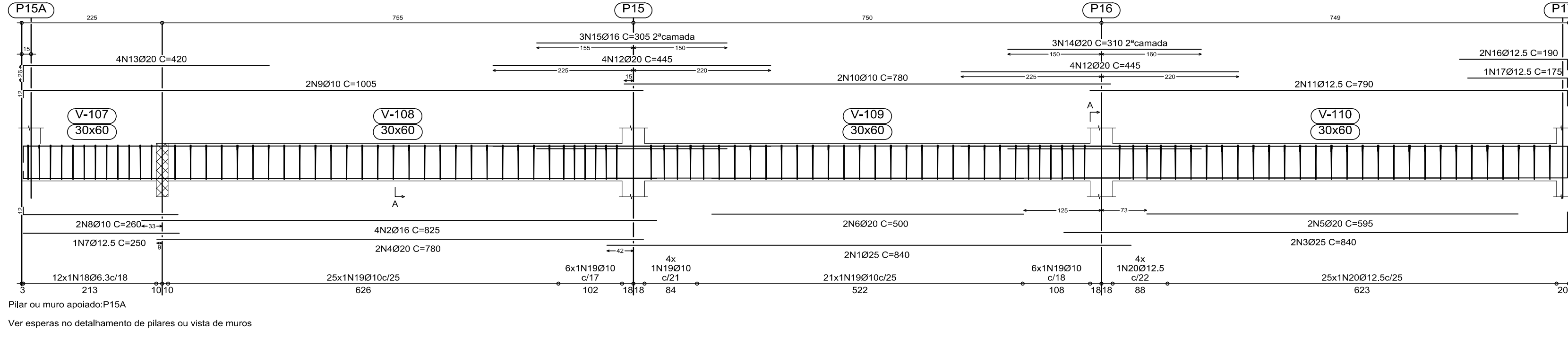
V 203
Escala 1:50



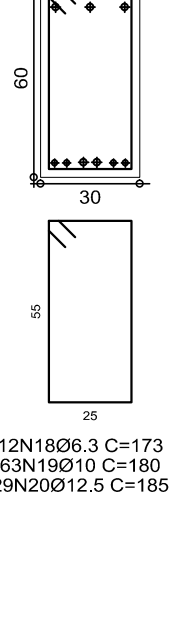
Corte A
Escala 1:20



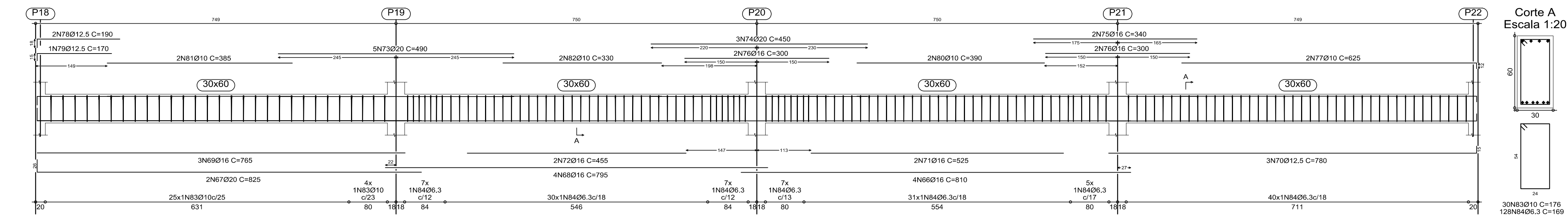
V 204
Escala 1:50



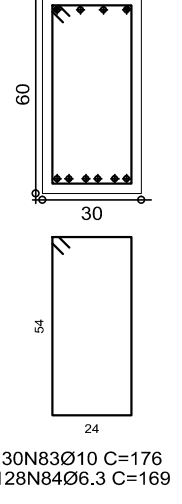
Corte A
Escala 1:20



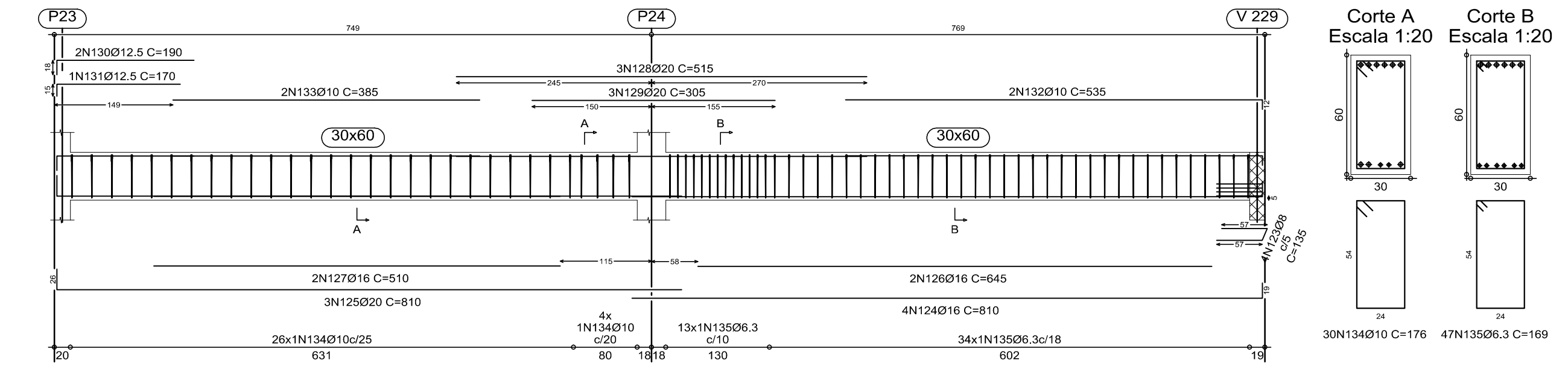
V 205
Escala 1:50



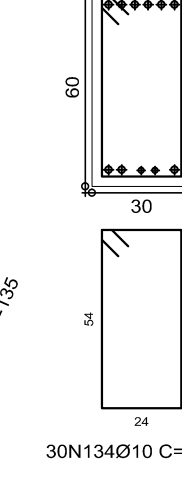
Corte A
Escala 1:20



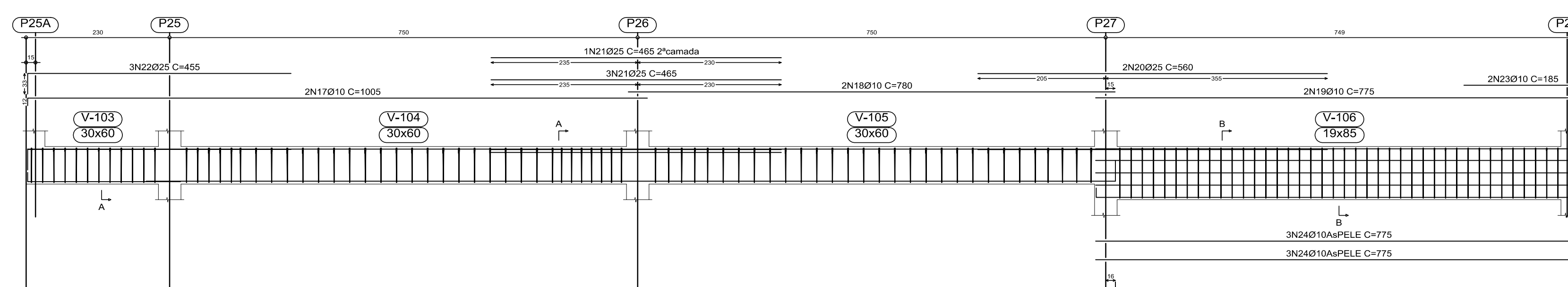
V 206
Escala 1:50



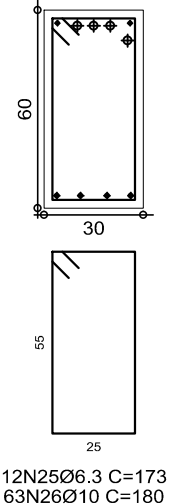
Corte A
Escala 1:20



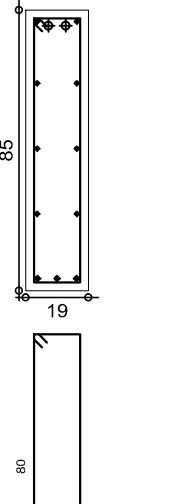
V 207
Escala 1:50



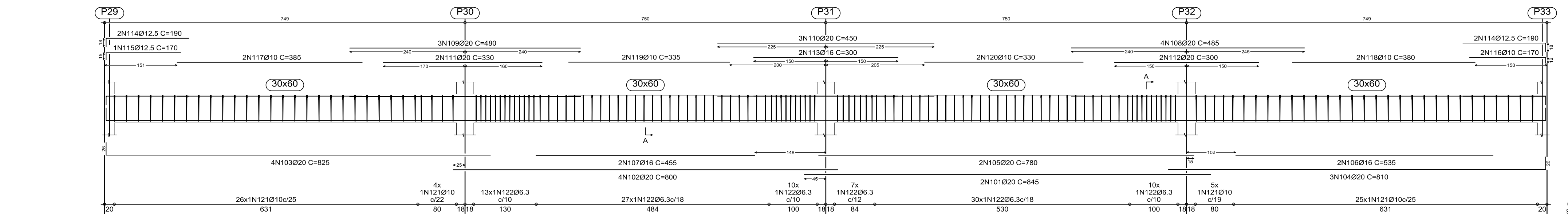
Corte A
Escala 1:20



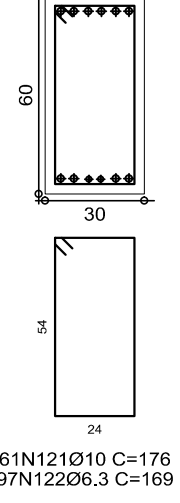
Corte B
Escala 1:20



V 208
Escala 1:50



Corte A
Escala 1:20



Elemento	Pos.	Diam.	Q.	Dob.	Ret.	Dob.	Comp.	Total	CA-50-A	CA-60-B	
(kg)											
V 201	1	016	4	800	820	1280	51.5				
	2	016	5	799	26	4125	64.8				
	3	016	5	790	810	4050	63.8				
	4	020	2	530	530	1060	26.2				
	5	016	5	505	505	1010	23.8				
	6	016	2	330	330	660	10.4				
	7	012.5	2	305	305	610	9.0				
	8	012.5	2	15	185	200	4.0				
	9	012.5	2	110	185	370	3.6				
	10	016	1	19	165	185	2.9				
	11	016	1	156	175	175	2.7				
	12	010	2	375	375	750	4.7				
	13	010	2	370	370	740	4.4				
	14	010	2	270	270	540	3.4				
	15	016	24	775	775	16080	73.0				
	16	08	12	760	770	10240	36.3				
	Total 100%:									484.3	
V 202	18	016	4	801	800	3200	51.5				
	19	016	5	800	820	3280	51.5				
	20	016	5	796	805	4025	63.2				
	21	020	2	530	530	1060	26.2				
	22	020	2	515	515	1030	25.6				
	23	020	1	365	365	730	8.8				
	24	020	1	335	335	670	8.3				
	25	012.5	2	180	185	370	3.6				
	26	012.5	2	15	170	185	3.0				
	27	016	1	166	165	165	2.9				
	28	010	2	156	175	175	2.7				
	29	010	2	370	370	740	4.7				
	30	010	2	270	270	540	3.4				
	31	010	2	265	265	530	3.3				
	32	08	24	775	775	16080	73.0				
	33	08	12	760	770	10240	36.3				
	Total 100%:									477.0	
V 203	35	016	5	796	815	4075	64.0				
	36	016	5	796	805	4025	63.2				
	37	016	4	530	530	1060	26.2				
	38	016	2	305	305	610	9.0				
	39	012.5	2	185	15	200	4.0				
	40	012.5	2	15	170	185	3.6				
	41	016	1	171	190	190	3.0				
	42	016	1	156	175	175	2.7				
	43	010	2	365	365	730	8.8				
	44	010	2	360	360	720	8.4				
	45	08	12	775	775	16080	73.0				
	46	08	12	760	770	10240	36.3				
	47	06.3	80		219	10200	65.0				
	Total 100%:									477.0	
	V 204	48	08	4	57	32	57	138	544	2.1	
		49	020	2	440	440	880	160	41.5		
		50	016	4	19	796	815	320	51.2		
51		016	4	779	26	3180	49.9				
52		016	2	680	680	1360	21.4				
53		016	2	595	595	1190	18.5				
54		016	3	515	515	1545	24.3				
55		016	3	485	485	1455	22.5				
56		020	2	315	315	630	15.6				
57		020	2	315	315	630	15.6				
58		012.5	2	112	18	380	5.7				
59		016	1	158	19	175	1.7				
60		010	2	12	385	385	7.0				
61		010	2	325	325	650	10.1				
62		06.3	80		169	16941	37.2				
63		010	20		171	1014	32.1				
Total 100%:									447.9		
V 205	66	016	4	810	810	3200	50.9				
	67	020	2	796	825	1650	40.8				
	68	016	4	755	795	3180	49.9				
	69	016	3	765	765	2295	36.0				
	70	012.5	3	765	780	2340	23.0				
	71	016	2	625	625	1250	19.5				
	72	016	2	455	455	910	14.3				
	73	020	2	480	480	960	15.6				
	74	020	2	450	450	900	13.3				
	75	016	3	340	340	1020	15.7				
	76	016	3	340	340	1020	15.7				
	77	010	4	613	620	2480	2.9				
	78	012.5	18	112	18	380	5.7				
	79	012.5	10	155	170	170	1.7				
	80	010	2	385	385	770	4.8				
	81	010	2	385	385	770	4.8				
	82	010	2	330	330	660	4.1				
83	010	20		169	16941	37.2					
84	06.3	127		171	1014	32.1					
Total 100%:									513.9		
V 207	86	020	4	26	814	814	320	53.1			
	87	016	4	796	825	3200	50.6				
	88	012.5	3	15	761	15	791	2373	23.3		
	89	016	2	450	450	900	14.1				
	90	020	2	550	550	1100	27.2				
	91	016	2	480	480	960	26.1				
	92	016	2	300	300	600	5.4				
	93	020	2	208	235	470	11.8				
	94	020	1	20	179	205	5.1				
	95	012.5	1	155	15	170	1.7				
	96	010	2	385	385	770	4.8				
	97	010	2	340	340	680	4.3				
	98	08	8	760	770	10100	24.2				
	99	06.3	80		169	16977	38.9				
	100	05	40		164	1700	12.2				
	Total 100%:									513.9	13.4
	V 208	101	020	2	845	845	1690	41.8			
102		020	4	800	800	3200	79.1				
103		020	4	799	825	3300	81.6				
104		020	3	784	810	2430	60.1				
105		016	2	780	780	1560	38.8				
106		016	2	535	535	1070	16.8				
107		016	2	455	455	910	14.3				
108		020	4	485	485	1940	48.0				
109		020	3	480	480	1440	35.6				
110		020	3	450	450	1350	33.4				
111		020	3	330	330	990	15.3				
112		020	2	300	300	600	5.4				
113		016	2	300	300	600	5.4				
114		012.5	4	18	172	190	7.0				
115		012.5	1	155	170	170	1.7				
116		010	2	158	12	170	3.0				
117		010	2	385	385	770	4.8				
118	010	2	380	380	760	4.8					
119	010	2	270	270	540	3.4					
120	010	2	330	330	660	4.1					
121	010	60		170	16960	40.3					
122	06.3	97		139	1693	4.0					
Total 100%:									500.1	8.1	
V 206	123	08	4	57	21	57	159	520	2.1		
	124	016	4	791	19	3180	49.9				
	125	016	3	645	645	1900	28.2				
	126	016	2	515	515	1545	24.3				
	127	020	3	480	480	1440	35.6				
	128	020	3	450	450	1350	33.4				
	129	012.5	4	18	172	190	7.0				
	130	012.5	1	155	170	170	1.7				
	131	010	2	385	385	770	4.8				
	132	010	2	380	380	760	4.8				
	133	010	2	323	323	646	4.2				
	134	010	2	380	380	760	4.8				
	135	06.3	47		169	1704	19.8				
	Total 100%:									307.9	
	06. 01. 00. 01. 00. 01. 00. 01. 00. 01. 00. 01. 00. 01. 00. 01. 00. 01. 00. 01. 00. 01. 00. 01. 00. 01. 00. 01. 00. 01. 00. 01. 00. 01. 00. 01. 00. 01. 00. 01. 00. 01. 00. 01. 00. 01. 00. 01. 00. 01. 00. 01. 00. 01. 00. 01. 00. 01. 00. 01. 00. 01. 00. 01. 00. 01. 00. 01. 00. 01. 00. 01. 00. 01. 00. 01. 00. 01. 00. 01. 00. 01. 00. 01. 00. 01. 00. 01. 00. 01. 00. 01. 00. 01. 00. 01. 00. 01. 00. 01. 00. 01. 00. 01. 00. 01. 00. 01. 00. 01. 00. 01. 00. 01. 00. 01. 00. 01. 00. 01. 00. 01. 00. 01. 00. 01. 00. 01. 00. 01. 00. 01. 00. 01. 00. 01. 00. 01. 00. 01. 00. 01. 00. 01. 00. 01. 00. 01. 00. 01. 00. 01. 00. 01. 00. 01. 00. 01. 00. 01. 00. 01. 00. 01. 00. 01. 00. 01. 00. 01. 00. 01. 00. 01. 00. 01. 00. 01. 00. 01. 00. 01. 00. 01. 00. 01. 00. 01. 00. 01. 00. 01. 00. 01. 00. 01. 00. 01. 00. 01. 00. 01. 00. 01. 00. 01. 00. 01. 00. 01. 00. 01. 00. 01. 00. 01. 00. 01. 00. 01. 00. 01. 00. 01. 00. 01. 00. 01. 00. 01. 00. 01. 00. 01. 00. 01. 00. 01. 00. 01. 00. 01. 00. 01. 00. 01. 00. 01. 00. 01. 00. 01. 00. 01. 00. 01. 00. 01. 00. 01. 00. 01. 00. 01. 00. 01. 00. 01. 00. 01. 00. 01. 00. 01. 00. 01. 00. 01. 00. 01. 00. 01. 00. 01. 00. 01. 00. 01. 00. 01. 00. 01. 00. 01. 00. 01. 00. 01. 00. 01. 00. 01. 00. 01. 00. 01. 00. 01. 00. 01. 00. 01. 00. 01. 00. 01. 00. 01. 00. 01. 00. 01. 00. 01. 00. 01. 00. 01. 00. 01. 00. 01. 00. 01. 00. 01. 00. 01. 00. 01. 00. 01. 00. 01. 00. 01. 00. 01. 00. 01. 00. 01. 00. 01. 00. 01. 00. 01. 00. 01. 00. 01. 00. 01. 00. 01. 00. 01. 00. 01. 00. 01. 00. 01. 00. 01. 00. 01. 00. 01. 00. 01. 00. 01. 00. 01. 00. 01. 00. 01. 00. 01. 00. 01. 00. 01. 00. 01. 00. 01. 00. 01. 00. 01. 00. 01. 00. 01. 00. 01. 00. 01. 00. 01. 00. 01. 00. 01. 00. 01. 00. 01. 00. 01. 00. 01. 00. 01. 00. 01. 00. 01. 00. 01. 00. 01. 00. 01. 00. 01. 00. 01. 00. 01. 00. 01. 00. 01. 00. 01. 00. 01. 00. 01. 00. 01. 00. 01. 00. 01. 00. 01. 00. 01. 00. 01. 00. 01. 00. 01. 00. 01. 00. 01. 00. 01. 00. 01. 00. 01. 00. 01. 00. 01. 00. 01. 00. 01. 00. 01. 00. 01. 00. 01. 00. 01. 00. 01. 00. 01. 00. 01. 00. 01. 00. 01. 00. 01. 00. 01. 00. 01. 00. 01. 00. 01. 00. 01. 00. 01. 00. 01. 00. 01. 00. 01. 00. 01. 00. 01. 00. 01. 00. 01. 00. 01. 00. 01. 00. 01. 00. 01. 00. 01. 00. 01. 00. 01. 00. 01. 00. 01. 00. 01. 00. 01. 00. 01. 00. 01. 00. 01. 00. 01. 00. 01. 00. 01. 00. 01. 00. 01. 00. 01. 00. 01. 00. 01. 00. 01. 00. 01. 00. 01. 00. 01. 00. 01. 00. 01. 00. 01. 00. 01. 00. 01. 00. 01. 00. 01. 00. 01. 00. 01. 00. 01. 00. 01. 00. 01. 00. 01. 00. 01. 00. 01. 00. 01. 00. 01. 00. 01. 00. 01. 00. 01. 00. 01. 00. 01. 00. 01. 00. 01. 00. 01. 00. 01. 00. 01. 00. 01. 00. 01. 00. 01. 00. 01. 00. 01. 00. 01. 00. 01. 00. 01. 00. 01. 00. 01. 00. 01. 00. 01. 00. 01. 00. 01. 00. 01. 00. 01. 00. 01. 00. 01. 00. 01. 00. 01. 00. 01. 00. 01. 00. 01										