

VEM DO POSTO DE TRANSFORMAÇÃO

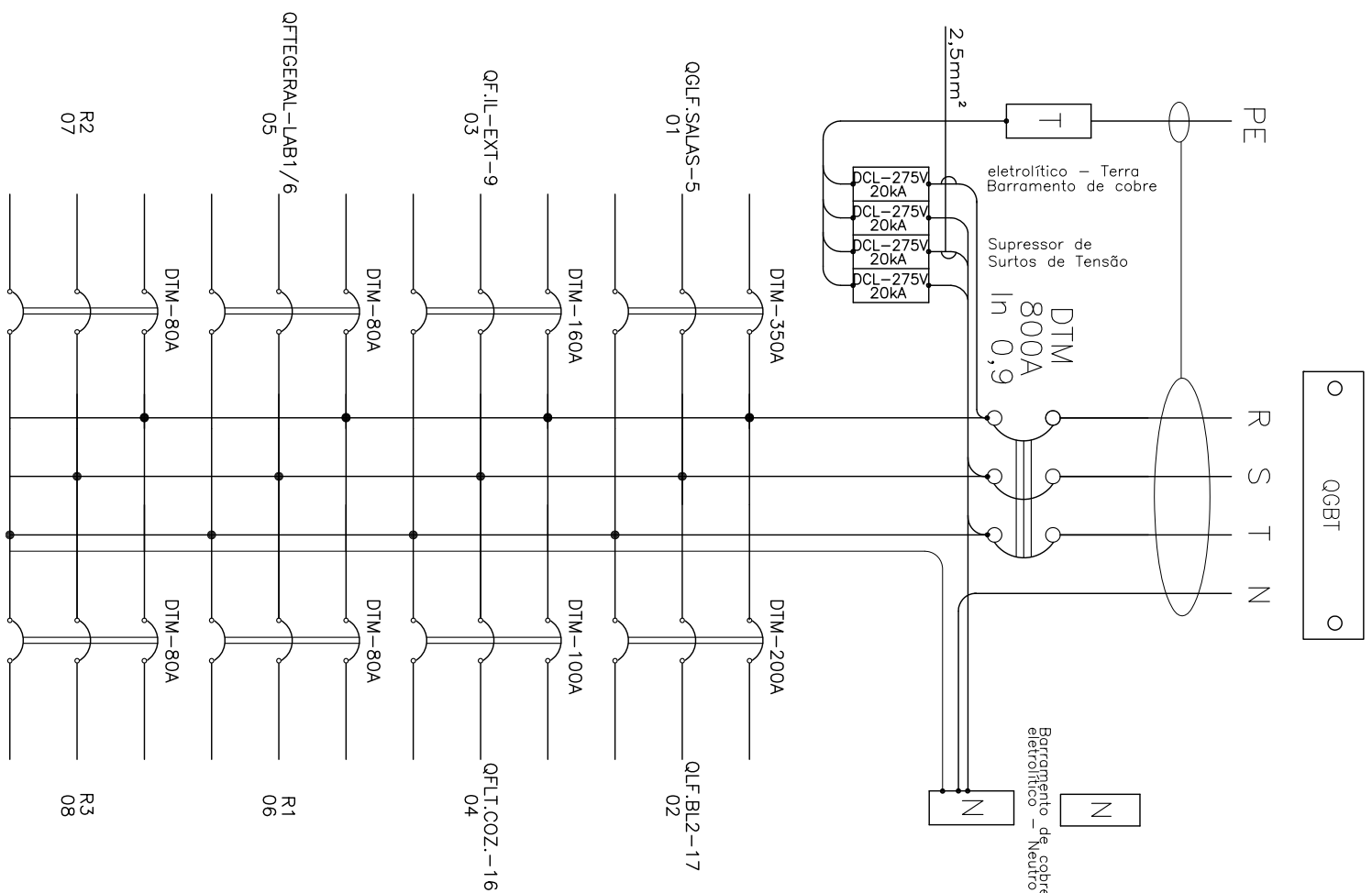
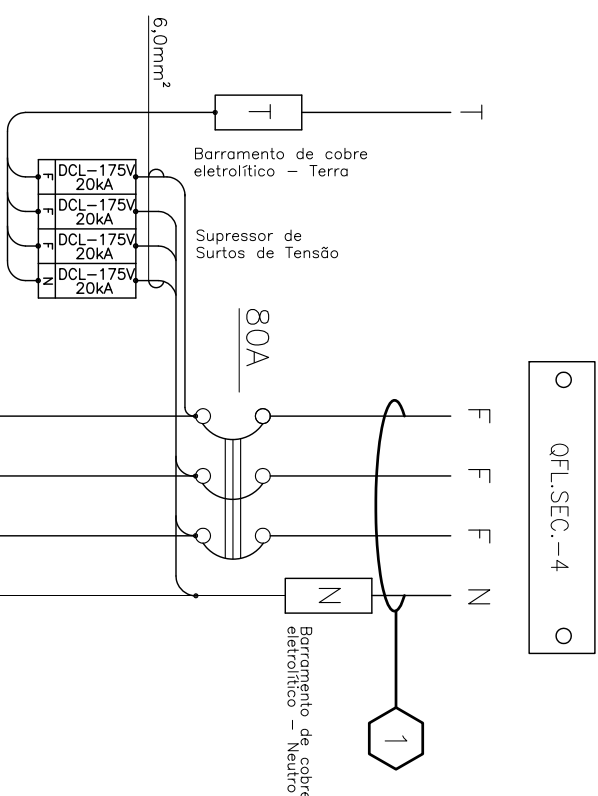


TABELA DE CARGAS QGBT

CHAMADO	DESCRIÇÃO	PROTEÇÃO	CONDUTOR
QOCE-SAG-5	QUADRO DE FÓRÇA E LUZ	DM-350	2x120mm ²
QUB-BL-17	QUADRO DE FÓRÇA E LUZ	DM-120	120mm ²
QF-BL-EX-9	QUADRO DE FÓRÇA E LUZ	DM-125	50mm ²
QF-BL-COZ-16	QUADRO DE FÓRÇA E LUZ	DM-100	35mm ²
QOCEFEPA-LAB1/6	QUADRO DE FÓRÇA E LUZ	DM-460	25mm ²
ALMEN. BLOCOS			
R2	QUADRO DE FÓRÇA E LUZ	DM-260	120mm ²
R3	QUADRO DE FÓRÇA E LUZ	DM-400	25mm ²
GERAL	DM-800	3x3x1,6mm ²	3x36mm ²

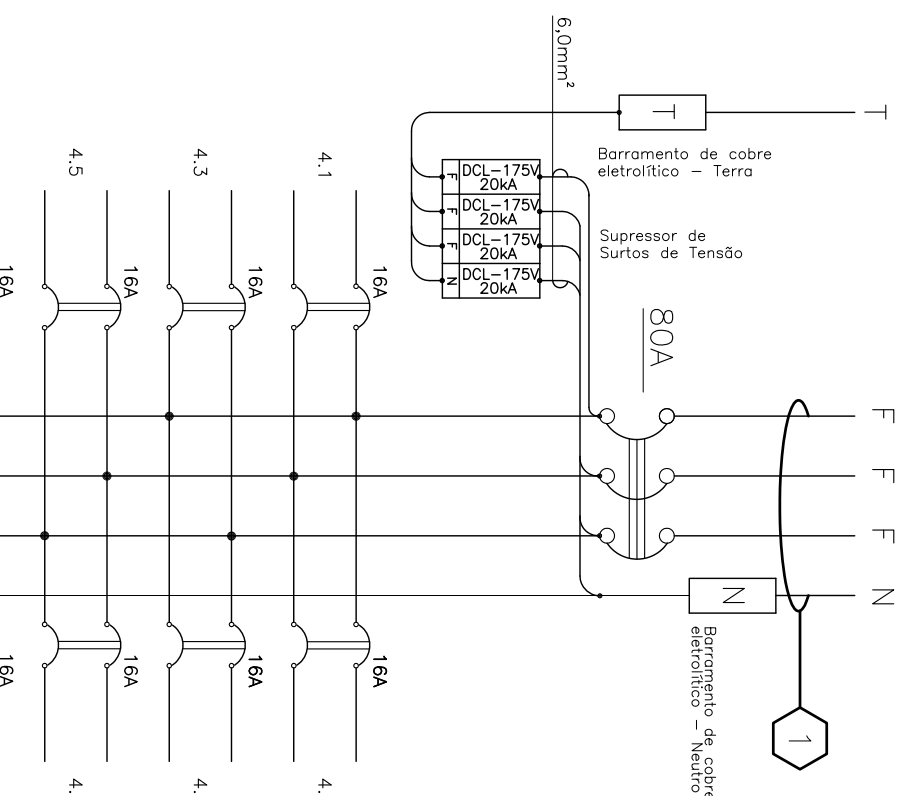
PANEL MONOBLOCO AUTOPORTANTE 2mm, IP54 (14)
BARRAMENTO DE 800A (15)



20A 028

PAINEL MONOBLOCO AUTO-PORTANTE 2mm, IP54 (20)
BARRAMENTO DE 100A (15)

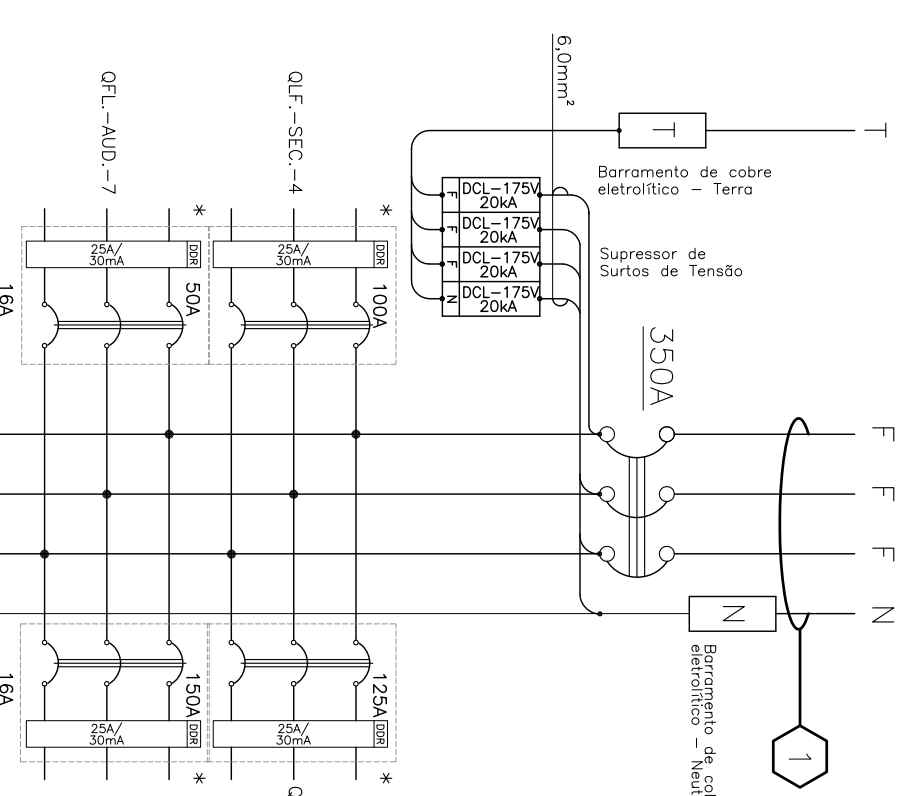
QFL SEC. -4



20A 028

R2	NEERNA	12,7	—	16	—
R3	NEERNA	12,7	—	16	—
R4	NEERNA	12,7	—	16	—
R5	NEERNA	12,7	—	16	—
R6	NEERNA	12,7	—	16	—
R7	NEERNA	12,7	—	16	—
R8	NEERNA	12,7	—	16	—
R9	NEERNA	12,7	—	16	—

☐ QGLF.SALAS-5 ☐

[illegible]

R5	PROFLEX	127	1,660	20	2.5
5,69	PROFLEX	127	1,660	20	2.5
5,70	PROFLEX	127	1,660	20	2.5
5,71	PROFLEX	127	1,660	20	2.5
QFL-SIG-4	QFL-SIG-4	220/26	28,724	100	35
QFL-LAB-6	QFL-LAB-6	220/26	47,380	125	50
QFL-LUD-7	QFL-LUD-7	220/26	9,650	50	10
QF-AC-8	QF-AC-8	220/26	63,000	150	70
R1	RESERVA	127	--	16	--
R2	RESERVA	127	--	16	--
R3	RESERVA	127	--	16	--
R4	RESERVA	127	--	16	--
R5	RESERVA	127	--	16	--
R6	RESERVA	127	--	16	--
R7	RESERVA	127	--	16	--
R8	RESERVA	127	--	16	--
R9	RESERVA	127	--	16	--
R10	RESERVA	127	--	16	--
R11	RESERVA	127	--	16	--
R12	RESERVA	127	--	16	--
R13	RESERVA	127	--	16	--

R4	RESERVA
R5	RESERVA

Nome do Quadro:	OCF SAUS-5
Procedimento:	
Características:	P-40 / CHDA METALICA

R4	RESERVA
R5	RESERVA